

# SOUTHERN CROSS Hand Operated DIAPHRAGM PUMP

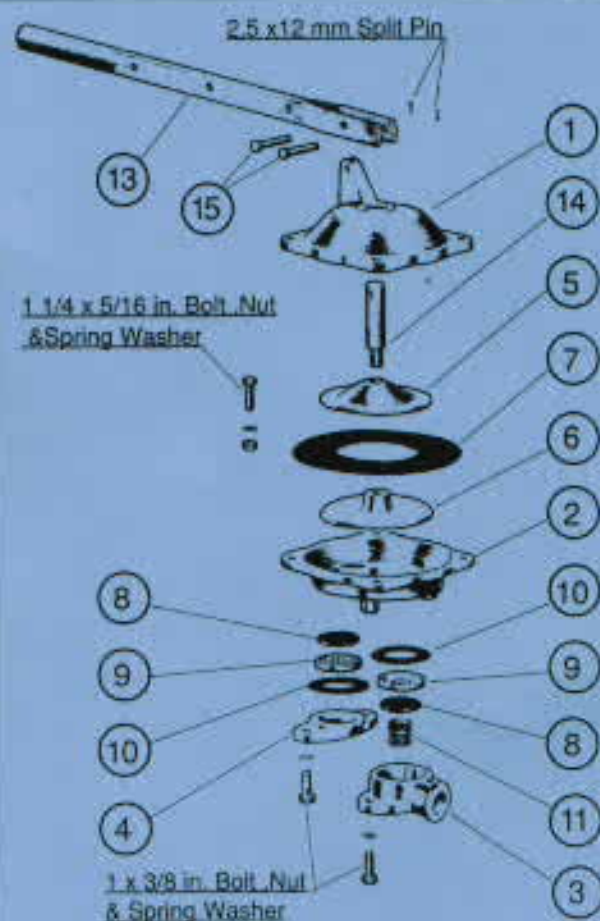
Particularly suited as a priming pump for Centrifugal Pumps. It is preferable to mount the Diaphragm Pump into the suction line, close to the centrifugal pump.



**CAPACITY:** 0.5 litres per second against discharge heads of up to 12 m, and with a suction lift not exceeding 7.5 m.

**SPECIFICATIONS:** Suction—screwed 25NB (1 in BSP) female.  
Discharge—screwed 20NB (3/4 in BSP) female. Body—cast iron

**KDC PARTS LIST:** 1. Body - top half. 2. Body - bottom half.  
3. Discharge Flange. 4. Suction Flange. 5. Diaphragm Top Plate.  
6. Diaphragm Bottom Plate. 7. Diaphragm. 8. Valve Rubber. 9. Valve Seat.  
10. Suction and Discharge Flange Gasket. 11. Discharge Valve Spring.  
13. Handle Assembly. 14. Plunger Rod. 15. Handle Pivot Pin.



As Tyco policy is one of constant improvement, we reserve the right to make specification changes without notice and without incurring liability.

**tyco**

Flow Control

**Pumping  
Systems**

Brisbane...	Tel: 07 3274 4233
Sydney...	Tel: 02 9605 3499
Melbourne...	Tel: 03 9312 4944
Adelaide...	Tel: 08 8240 2866
Perth...	Tel: 08 9470 2022
Exeter...	Tel: 03 6394 3132
Toowoomba...	Tel: 07 4688 4111
National...	Tel: 131 786
International...	Tel: +61 7 3274 4233



SOUTHERN CROSS



EVERFLOW PUMPS



TAMAR

Ellis Tanks  
5 Lucinda Street  
Toowoomba Q 4350

P: 07 46 357 507  
F: 07 46 357 507  
M: 0427 716 087

Email: [glenn@elistanks.com.au](mailto:glenn@elistanks.com.au)  
Web: [www.elistanks.com.au](http://www.elistanks.com.au)