

Distributed by...  
Ellis Tanks - [www.ellistanks.com.au](http://www.ellistanks.com.au)  
P: 07 46 357 507 M: 0427 716 087



## 100 mm STAINLESS STEEL SUBMERSIBLE BOREHOLE PUMP

**"W" SERIES**

# ALL STAINLESS STEEL

### FEATURES

- Heavy duty, high quality construction, cold pressed 304 stainless steel
- Heavy duty top bearing (NBR + 304 stainless steel) with an intermediate bearing at each stage
- Robust shaft & shaft coupling
- Rugged cable guard
- Discharge chamber with in-built reliable check valve for low head loss
- Resistant to corrosion and abrasion
- Simple maintenance with easy dismantling and assembly
- Easy to replace natural rubber wear rings and bearings
- Optimized hydraulic profiles for high operating efficiencies

### APPLICATIONS

- Private & public water supply
- Sprinkler & drip irrigation
- Booster pumping
- Fire fighting
- Fountains & water features
- Industrial applications
- Rural supplies





# 100 mm STAINLESS STEEL SUBMERSIBLE BOREHOLE PUMP

## GENERAL INFORMATION

### 4" "W" Series Submersible Pumps

- Nominal 0.5–4.0 L/s (0.2 – 15 m<sup>3</sup>/h)
- Heads to 410 metres
- Optional Franklin or Coverco motors
- Motor rating to 7.5 kW
- Vertical and horizontal position of operation (subject to motor fitted)
- Maximum temperature of pumping fluid 30°C
- Maximum allowable solid content 50 g/m<sup>3</sup>
- All parts of stainless steel AISI 304
- 4WPS 1.5, 2.5, 4 are all 1 1/2" delivery
- 4WPS 7, 12 are both 2" delivery

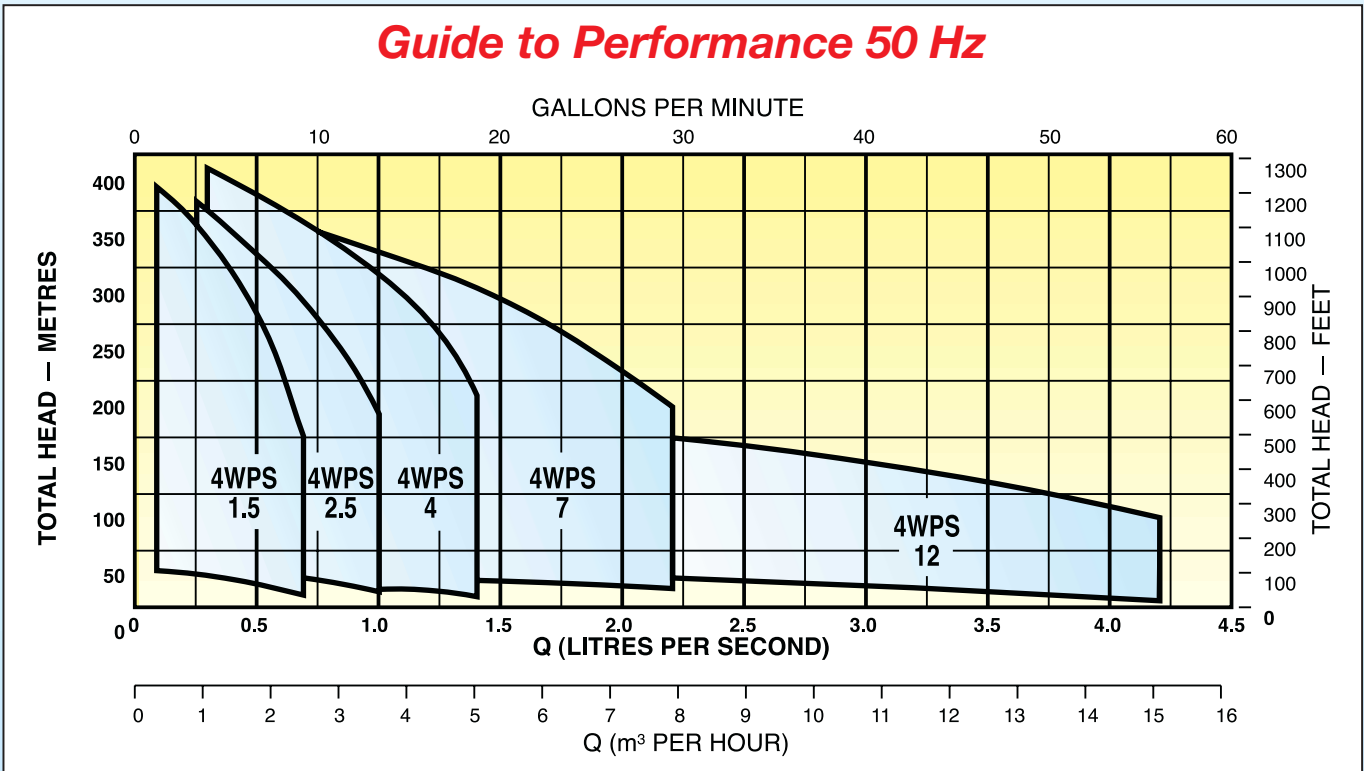


**IDENTIFICATION CODE**

4 WPS 7 – 13 / F 150 T

- Motor phase: T = 3 ph: S = 1 ph
- Motor size: 150 = 1.5 kW
- Motor type: F = Franklin, C = Coverco
- Number of stages
- Nominal flow rate in m<sup>3</sup>/h
- Stainless steel submersible pump
- Suitable for 100 mm or larger bores

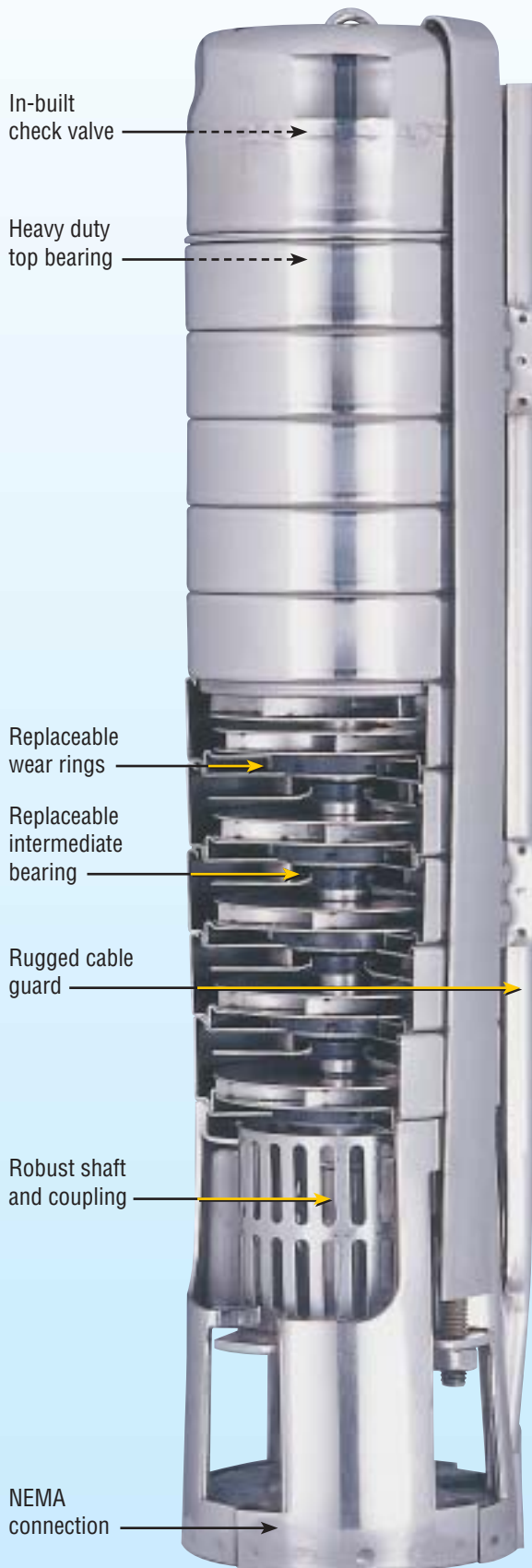
## Guide to Performance 50 Hz



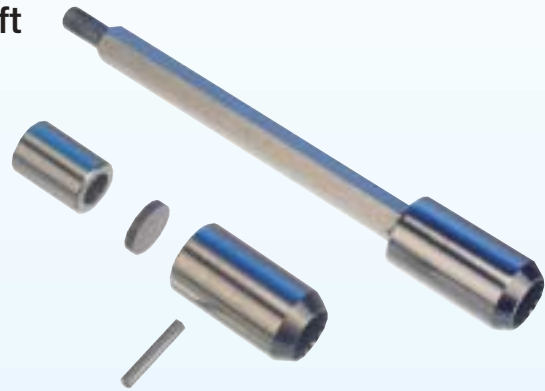
# 100 mm STAINLESS STEEL SUBMERSIBLE BOREHOLE PUMP



## PUMP SECTION AND LIST OF MAIN COMPONENTS

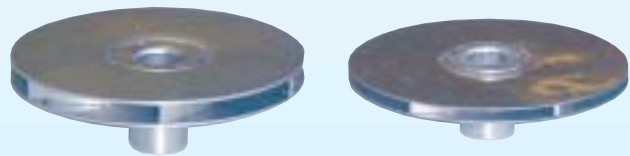


### Shaft



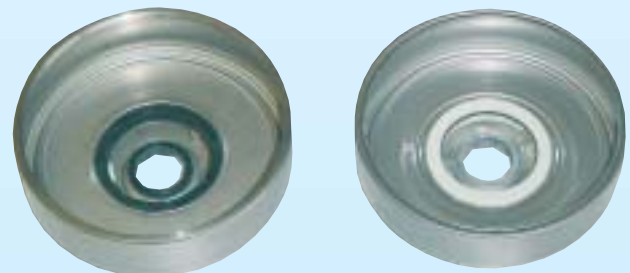
WPS (shown above)	MAJOR COMPETITOR (not shown)
Hexagonal shaft with high quality coupling, quenched disk to absorb axial forces and a pin to ensure the fixing of the coupling	Spline shaft with high quality coupling but without quenched disk and no pin

### Impeller



WPS	MAJOR COMPETITOR
Steel thickness <u>minimum 1 mm</u>	Steel thickness <u>0.5 mm</u>
<u>6 Spot welds per vane</u>	<u>4 spot welds per vane</u>
<u>6 contact points with shaft</u>	<u>3 contact points with shaft</u>
Upthrust protection with wear rings	Small have no upthrust protection

### Diffuser



WPS	MAJOR COMPETITOR
Steel thickness <u>minimum 1 mm</u>	Steel thickness <u>0.5 mm</u>
<u>6 Spot welds per vane</u>	<u>4 spot welds per vane</u>
<u>Over-sized NBR intermediate bearing</u>	<u>Small NBR intermediate bearing</u>
Full rubber (NBR) neck ring with reinforcing stainless steel ring	Injection moulded plastic neck ring with a rubber O-ring

**Result:** The WPS impeller is stronger due to more material and more welding points. This results in a higher resistance when water with sand is pumped. The oversized bearings resist better when pump runs dry.



100 mm STAINLESS STEEL  
SUBMERSIBLE BOREHOLE PUMP

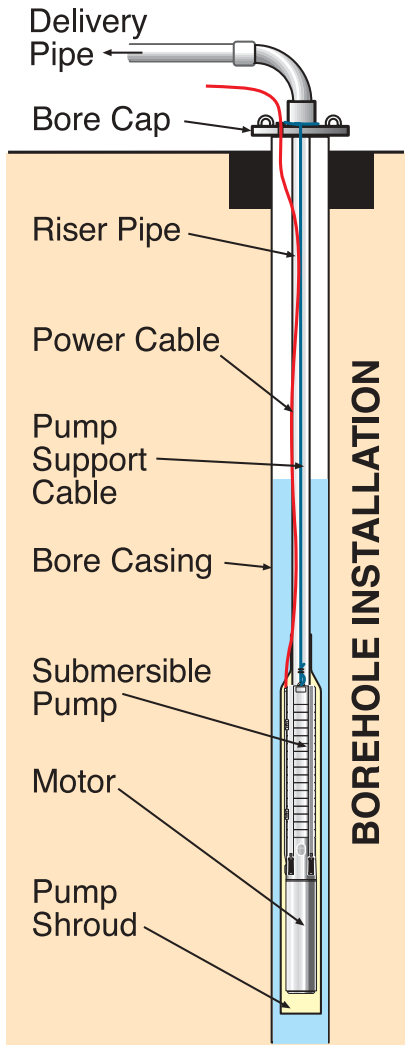
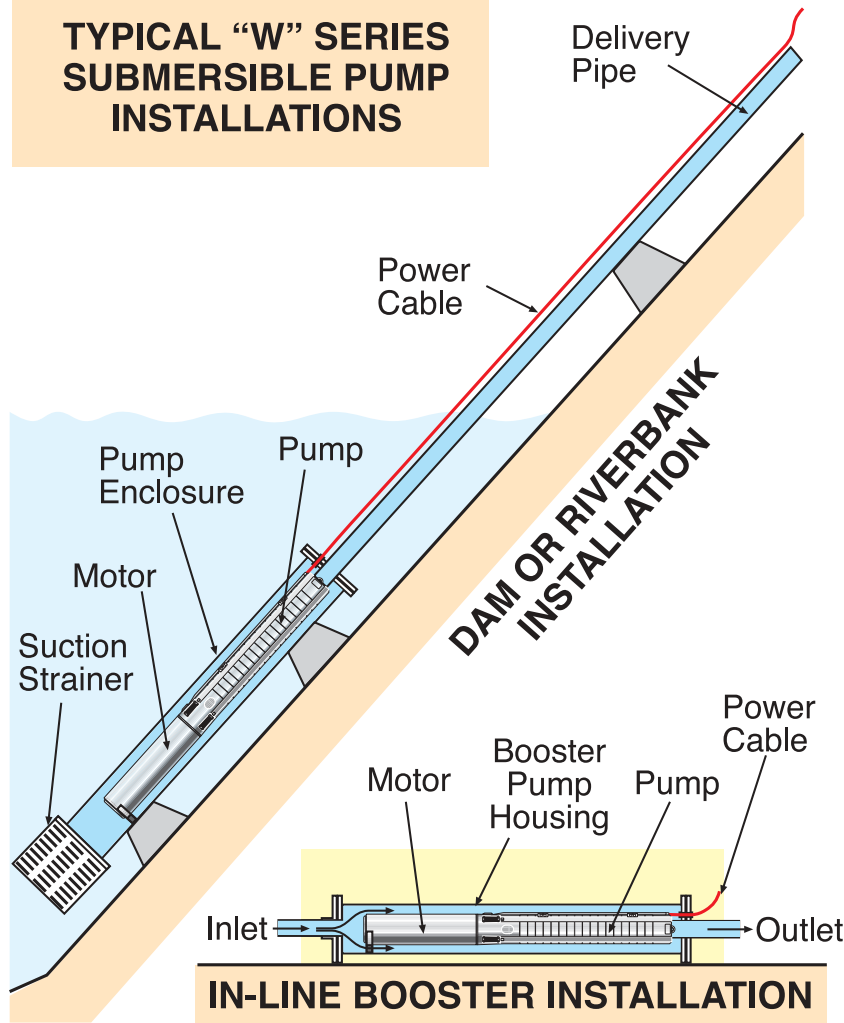


“W” SERIES

# ALL STAINLESS STEEL

Distributed by...  
Ellis Tanks  
5 Lucinda Street  
Toowoomba Q 4350  
  
P: 07 46 357 507  
F: 07 46 357 507  
M: 0427 716 087  
  
Email: [glenn@ellistanks.com.au](mailto:glenn@ellistanks.com.au)  
Web: [www.ellistanks.com.au](http://www.ellistanks.com.au)

### TYPICAL “W” SERIES SUBMERSIBLE PUMP INSTALLATIONS



As Tyco policy is one of constant improvement, we reserve the right to make specification changes without notice and without incurring liability.